

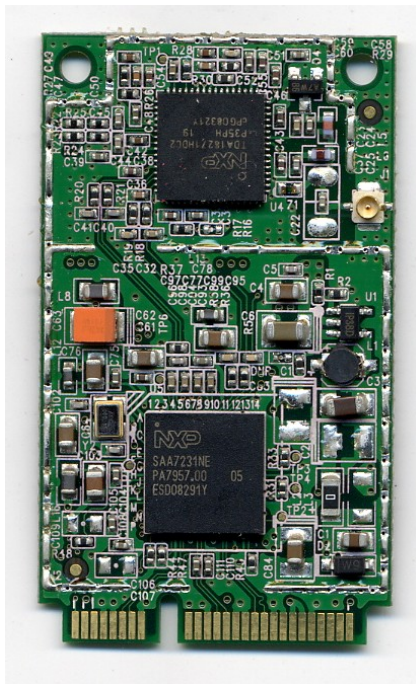
# CTX1920\_V1.1.1

## Product Specification

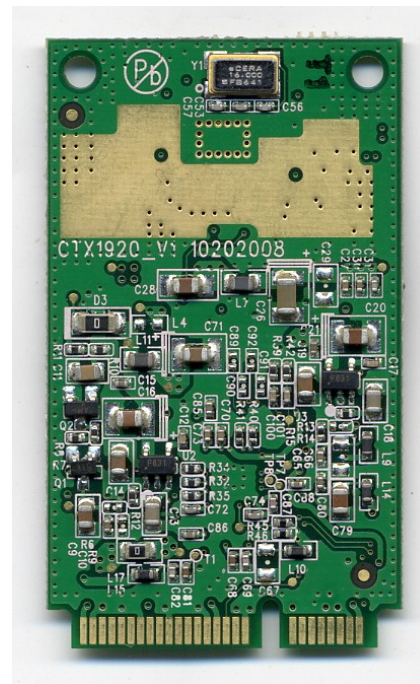
Release 23 06 09

<b>Description:</b>	CTX1920 is a highly integrated Mini Card using the PCIe bus signals and supports analog and digital TV.
<b>Chipset:</b>	NXP TDA18271HD/C2, NXP SAA7231NE
<b>Connector:</b>	Hirose U.FL-R-SMT-1
<b>TV System:</b>	Supports DVB-T and TV broadcasting PAL, B/G/D/K/I & SECAM L/L', NTSC

Top-View:



Bottom-View:



**CREATIX**  
Creative Information eXchange

Creatix Polymedia GmbH  
Kastanienweg 11-13  
D-66386 St. Ingbert

Telefon: +49 6894 92967-0  
Fax: +49 6894 92967-10

**CTX1920\_V1.1.1**

**Product Specification**

**Release 23 06 09**

**APPROVALS:**

- EN55013
- EN55020
- EN60950
- RoHS-conform
- Tuner Norig 2.0 conform

**RATINGS:**

DC Input:           + 3.3V   == 550mA

**PCB DIMENSIONS:**

30,3mm x 50,9mm

**SYSTEM REQUIREMENT:**

- Pentium IV 2.0 MHz, Pentium M 1.7 GHz or Higher
- 512MB RAM
- Microsoft DirectX 9.0c or higher
- Mini Card slot with Version 1.x Interface
- Microsoft Windows XP / Vista x86 / Vista x64